



EXPLODED VIEW DRAWING & PARTS LIST

SKD-B100L

SKD-B103L

SKD-B100LS4

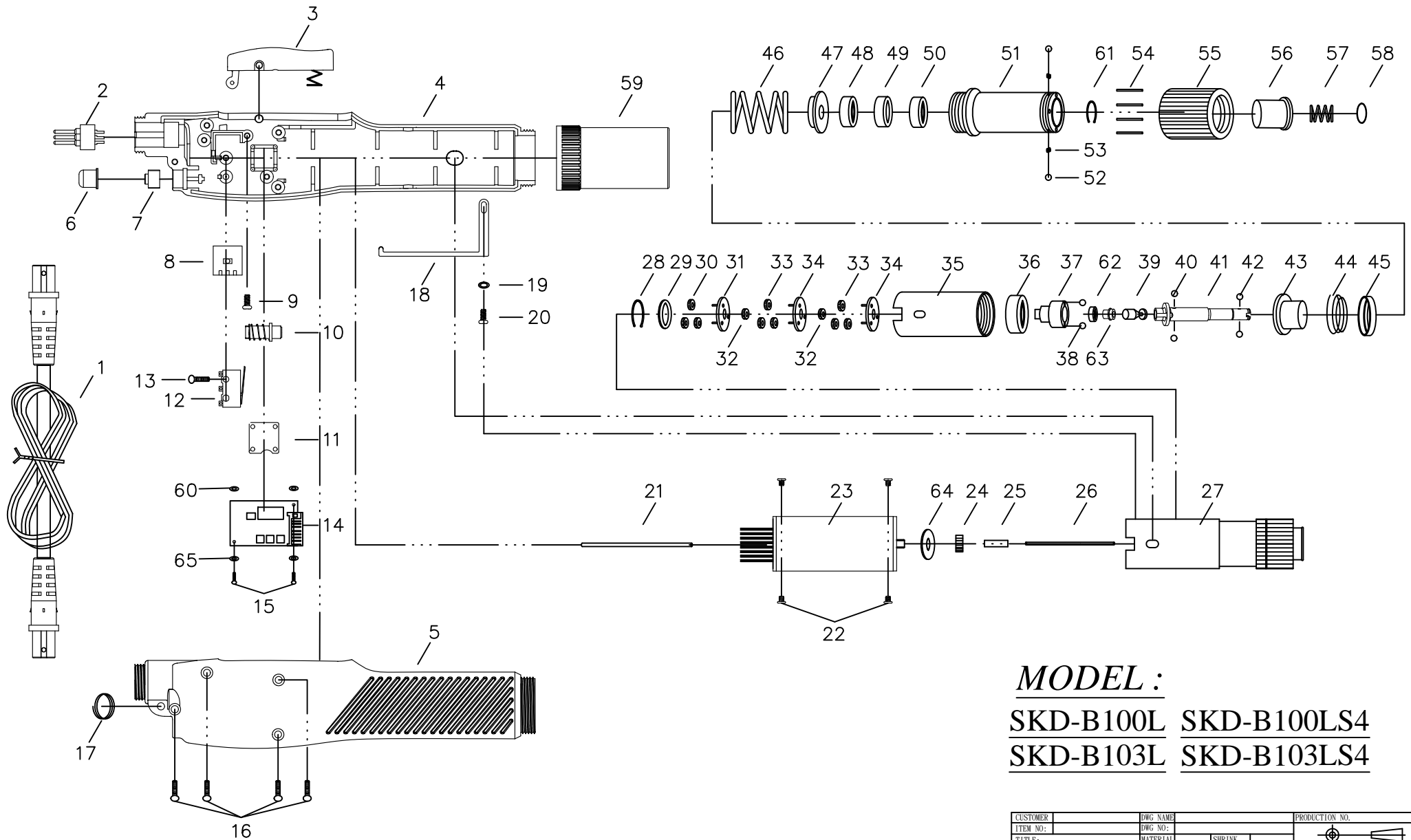
SKD-B103LS4

DC-TYPE Automatic Non Carbon-Brush Series

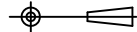
KILEWS INDUSTRIAL CO., LTD.

<http://www.kilews.com>

Y2F054B-E-006



MODEL :
SKD-B100L SKD-B100LS4
SKD-B103L SKD-B103LS4

CUSTOMER	DWG NAME	PRODUCTION NO.	
ITEM NO:	DWG NO:		
TITLE:	MATERIAL	SHRINK	THIRD ANGLE PROJECTION
	DES. BY	DATE	UNIT
	CHKD. BY	DATE	SCALE
	APPD. BY	DATE	SHT NO. OF SHTS.

NO	PARTS NO	PARTS NAME-E	PARTS NAME-C	Q'ty	NO	PARTS NO	PARTS NAME-E	PARTS NAME-C	Q'ty
1	AA50001-27N	CORD ASSEMBLY	電源線	1		GG20260-2	GEAR SEAT-B100LS4/B103LS4	齒盤-B100LS4/B103LS4	1
2	PZ50189	3 CORE PLUGS	3芯插座	1	32	G20113	CENTRAL GEAR-B100L/B103L	中心齒-B100L/B103L	1
3	CC50001	TRIGGER ASSEMBLY	手按開關半成品	1		G20113-1	CENTRAL GEAR-B100LS4/B103LS4	中心齒-B100LS4/B103LS4	2
	CC50001-1	TRIGGER ASSEMBLY-ESD	手按開關半成品-防靜電	1	33	GH92230-1	IDLE GEAR-B100L/B103L	游星齒輪-B100L/B103L	3
4	CB93108	HOUSING-UNDERSIDE-WHITE	下蓋-白色	1		GH92230-4	IDLE GEAR-B100LS4/B103LS4	游星齒輪-B100LS4/B103LS4	6
	CB93108-1	HOUSING-UNDERSIDE-ESD	下蓋-防靜電	1	34	GG20260-1	GEAR SEAT-B100L/B103L	齒盤-B100L/B103L	1
5	CA93108	HOUSING-UPSIDE-WHITE	上蓋-白色	1		GG20260-2	GEAR SEAT-B100LS4/B103LS4	齒盤-B100LS4/B103LS4	2
	CA93108-1	HOUSING-UPSIDE-ESD	上蓋-防靜電	1	35	GA28231-7	GEAR CASE	上離合器筒	1
6	CC28028-5	SWITCH BUTTON(BLACK)FOR B100L/B100LS4	手按開關鈕(黑色)B100L/B100LS4	1	36	GN30431	MAIN BEARING	離合器主軸承	1
	CC28028-6	SWITCH BUTTON(ORANGE)FOR B103L/B103LS4	手按開關鈕(橙色)B103L/B103LS4	1	37	GC20300-2	SHAFT GUIDE-B100L/B100LS4	上離合器頭-B100L/B100LS4	1
7	H10207	TOUCHES THE SWITCH	觸動開關	1		GC20300	SHAFT GUIDE-B103L/B103LS4	上離合器頭-B103L/B103LS4	1
8	EG31420-1	PCB-START	機板成品(啟動)	1	38	GP30371	STEEL BALLS-3 φ	跳脫鋼珠	2
9	CH30201-5	SCREW	螺絲	1	39	GU30373	STOP PILOT	酒杯-B100系列	1
10	CE50153	PUSH ROD	開關推桿半成品	1	40	GP21291B	STELL BALLS-2.5 φ	酒杯鋼珠	2
11	CE80002	FUXURE	固定片	1	41	GD20320-1	SHAFT	傳動軸	1
12	H10209-3	SHUT OFF SWITCH-B100L	剎車開關-B100L	1	42	GP28331	STEEL BALLS-1.5 φ	起子頭帽鋼珠	2
	H10209-2	SHUT OFF SWITCH-B103L	剎車開關-B103L	1	43	GF20340	WARING PLATE	扭力推盤	1
13	CH20511-3	SCREW	螺絲	1	44	GO30540	SPRING	兩段式小彈簧	1
14	EG31423-2	PCB	機板成品	1	45	GO30530	SPRING'S COVER	兩段式彈簧蓋	1
15	CH90154-1	SCREW FOR PCB	螺絲	2	46	GE20340-5	WARING SPRING-B100L/B100LS4	扭力彈簧-B100L/B100LS4	1
16	CH20511-3	SCREW FOR HOUSING	螺絲	4		GE20340-1	WARING SPRING-B103L/B103LS4	扭力彈簧-B103L/B103LS4	1
17	CJ20011	SUSPENSION RING	起子吊圈	1	47	GY21320	WARING SPRING SEAT	止推盤	1
18	CH30678C	EARTH THE SHEET COPPER	接地銅片	1	48	GN30447	BALL BEARING	軸承	1
19	CH20102-18	WASHER	華司	1	49	GW21530	SPACER FOR HEX	墊圈	1
20	CH30192	SCREW	螺絲	1	50	GN30447	BALL BEARING	軸承	1
21	MI30511-9	PILOT ROD	開關引導棒	1	51	G20200	CLUTCH CASE	下離合器筒	1
22	CH20102-24	SCREW FOR MOTOR	馬達螺絲	4	52	GP20331K	STEEL BALLS-2 φ	鋼珠	2
23	MO10001CE	MOTOR ASSEMBLY-B100L/B103L	馬達整組-B100L/B103L	1	53	GO90343	SPRING	下離合器筒彈簧	2
	MO10003CE	MOTOR ASSEMBLY-B100LS4/B103LS4	馬達整組-B100LS4/B103LS4	1	54	GL28381	TORQUE ADJUSTING PINS	扭力調整棒	4
24	M11325	GEAR	馬達主齒	1	55	GM20430-1	TORQUE ADJUSTING RING	扭力調整環	1
25	MG30081-2	PILOT ROD	陶瓷棒	1	56	GJ30473	BIT SLEEVE	起子頭帽	1
26	MI30511-5	PILOT ROD	開關引導棒	1	57	GO20390-1	BIT SPRING	起子頭帽彈簧	1
27	GZ28114-6C	CLUTCH ASSEMBLY-B100LC	離合器整組-B100LC	1	58	GQ21360	C-RING	起子頭帽 C環	1
	GZ28114-7C	CLUTCH ASSEMBLY-B103LC	離合器整組-B103LC	1	59	KC-9C	TORQUE FIXED RING	扭力固定環	1
	GZ28114-8C	CLUTCH ASSEMBLY-B100LS4C	離合器整組-B100LS4C	1		KC-9S	TORQUE FIXED RING-ESD	扭力固定環-防靜電	1
	GZ28114-9C	CLUTCH ASSEMBLY-B103LS4C	離合器整組-B103LS4C	1	60	P11020-4	INSULATING WASHER	絕緣墊片	2
28	GK20233	C RING	齒輪固定 C環	1	61	GK20235	C RING	傳動軸固定C環	1
29	GI28446	IRON WASHER	齒輪固定片	1	62	GN30437	BALL BEARING	軸承	1
30	GH92230	IDLE GEAR-B100L/B103L	游星齒輪-B100L/B103L	3	63	G21204	Center tip	中心梢	1
	GH92230-3	IDLE GEAR-B100LS4/B103LS4	游星齒輪-B100LS4/B103LS4	3	64	W10201-2	INSULATING WASHER	絕緣墊片 (0.2mm)	1
31	GG20260	GEAR SEAT-B100L/B103L	齒盤-B100L/B103L	1	65	P11020-4	INSULATING WASHER-ESD	絕緣墊片-防靜電	2